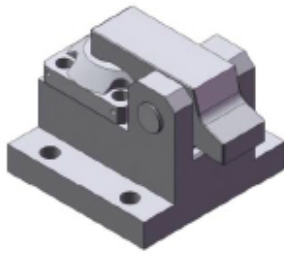
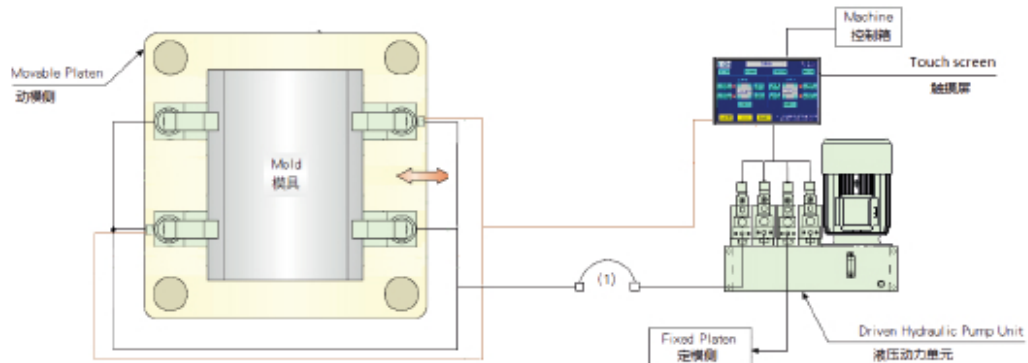
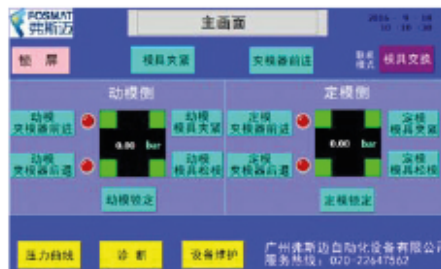


# HYDRAULIC MOLD CLAMP (No.20230506002)

## I. Hydraulic mold clamp system.



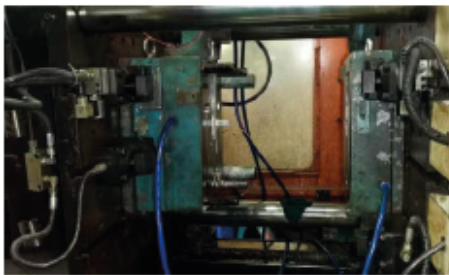
FS-B hydraulic clamp



PLC CONTROL / IN ENGLISH



Hydraulic station



**II. Hydraulic mold clamp type and spec:**

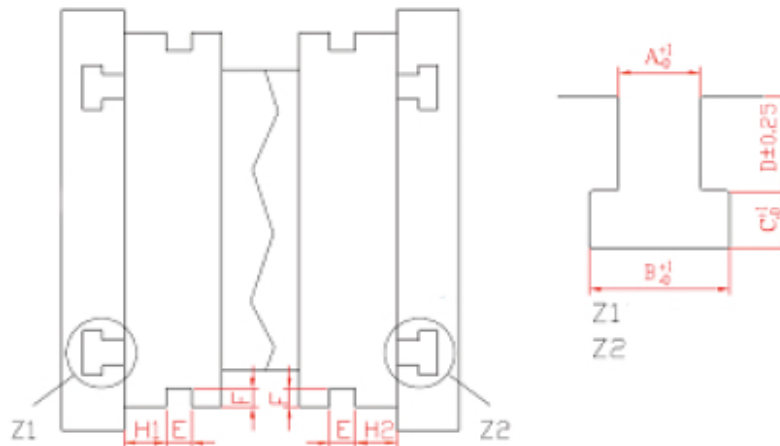
IMM	Mold base thickness/mm Moving platen side		Mold base thickness/mm Fixed platen side		Hydraulic clamp stroke /mm
	MAX	MIN	MAX	MIN	

**Hydraulic mold clamp type:**

IMM	SET	Hydraulic clamp Fixed platen side		Hydraulic clamp Moving platen side	
		Type	Qty/pcs	Type	Qty/pcs
		6T	2	6T	2

Remark : Hydraulic system have check valve to keep mold and operator safety when oil leak or any other urgent condition/ machine have to stop.

Mold will be locking safety on machine 10 more days when machine power is off.



No.	IMM (T)	T-slot Dimension/mm				Mold data/mm				Magnet block height /mm
		A	B	C	D	E	F	H1/H2	Min thickness	
1										

**Main material list**

<b>Item</b>	<b>Material name</b>	<b>Brand</b>	<b>Made in</b>
1	Pressure sensor	ASHCROFT	Germany
2	Pump	HYDAC/POOCCA	Germany/china
3	Solenoid valve	HYDAC/Eaton/SDL	Germany/USA/china
4	Electric motor	Ansheer	China
5	Seal	JINGBANG	china
6	Oil pipe	GAIDA	China
7	PLC	Panasonic	China
8	Power Supply	WMOULD	China
9	Low voltage apparatus	Schneider/Honeywell	china
10	Touch screen	WEINVIEW	china